

Total Area: 57.7 m² ... 621 ft²
All measurements are approximate and for display purposes only.

- Reception Room
14'4" x 11'7"
- Kitchen
11'5" x 6'1"
- Bedroom
14'4" x 13'1"
- Bedroom
11'3" x 10'0"
- Bathroom
6'7" x 4'11"
- Garden
14'9" x 16'4"



Energy Efficiency Rating		Current	Potential
Very energy efficient - lower running costs			
(92 plus) A			
(81-91) B			
(69-80) C			
(55-68) D		67	76
(39-54) E			
(21-38) F			
(1-20) G			
Not energy efficient - higher running costs			
England & Wales		EU Directive 2002/91/EC	



IVY ROAD, WALTHAMSTOW Offers In Excess Of £375,000 Share of Freehold 2 Bed Flat



Features:

- Two Bedroom Flat
- Ground Floor
- Private Rear Garden
- Own Front Door
- Share Of Freehold
- Chain Free

A smart and substantial two bedroom maisonette well placed for Walthamstow Village. Set across 621 square feet, with a private garden and Orford Road just a short walk away, it offers a lovely sense of balance between everyday practicality and one of E17's most sought after pockets.

E11, E7, E12 & E15
hello11@stowbrothers.com
0203 397 2222

E4 & N17
hello4@stowbrothers.com
0203 369 6444

E17 & E10
hello17@stowbrothers.com
0203 397 9797

E18 & IG8
hello18@stowbrothers.com
0203 369 1818

E8, E9, E5, N16, E3 & E2
hellohackney@stowbrothers.com
0208 520 3077

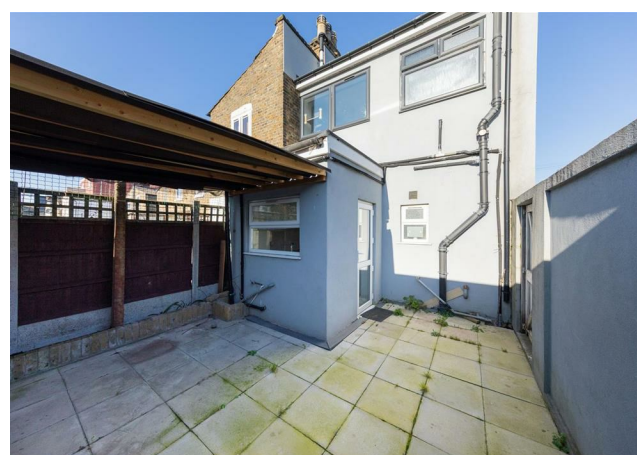
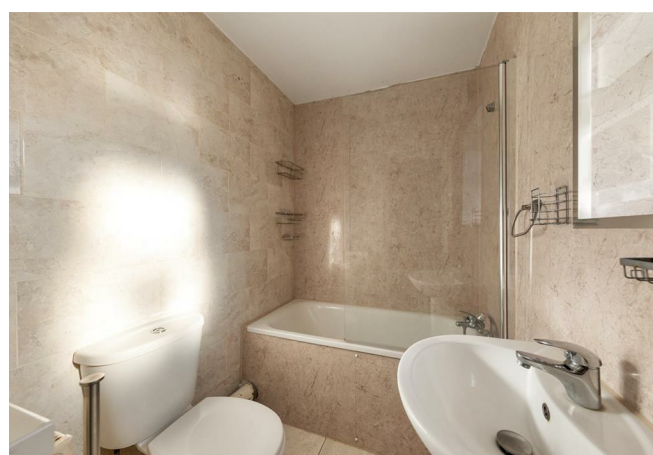
New Homes
newhomes@stowbrothers.com
0203 325 7227

Investment & Development
id@stowbrothers.com
0208 520 6220

Property Maintenance
propertymanagement@stowbrothers.com
0203 325 7228

STOWBROTHERS.COM
@STOWBROTHERS

REQUEST A VIEWING
0203 397 9797



IF YOU LIVED HERE.....

You'd step straight into the reception room, a generous central living space with grey wood effect flooring underfoot and plenty of room to settle into both lounging and dining. The kitchen sits just beyond, arranged in a neat galley layout with pale cabinetry, dark worktops and tiled flooring, while the bathroom is smartly finished in soft stone toned tiling and includes a bath with an overhead shower.

A small inner hall leads through to the two bedrooms, both well proportioned doubles. The larger room sits to the front and is brightened by a broad bay window, while the second has a similarly calm, simple finish, with grey carpet and neutral walls continuing the easy, unfussy feel seen throughout the home.

Outside, the private garden is paved for low maintenance use, giving you a handy spot for morning coffee, a few pots or warm weather seating. With Walthamstow Village close by and Lloyd Park within easy reach, you're well placed for both lively local

favourites and open green space.

WHAT ELSE?

- Walthamstow Central station is around thirteen minutes on foot, with the Victoria line getting you to King's Cross in just fifteen minutes. As this is the start of the line, you'll usually be able to get a seat.

- Orford Road is a short stroll away, with its much loved mix of independent shops, cafés, restaurants and everyday local favourites at the heart of Walthamstow Village.

- Lloyd Park is within easy reach for open green space, tennis courts, the Saturday market and the William Morris Gallery.



A WORD FROM THE EXPERT....

"I love living in Walthamstow – it's got such a great mix of things going on. Saturdays are my favourite, with the market in Lloyd Park full of fresh food, handmade bits, and plenty of friendly faces. The new Soho Theatre has brought amazing shows right to our doorstep, and if I fancy a pint, the Blackhorse Beer Mile breweries are perfect for a wander. When I need some fresh air, the Walthamstow Wetlands are just a short stroll away – all that greenery makes you completely forget you're in London. Plus, with brilliant transport links, it's so easy to hop on the Tube or Overground and be in Central London in no time at all".

WILLIAM JACKSON
E17 ASSISTANT BRANCH MANAGER

REQUEST A VIEWING
0203 397 9797

FOLLOW US ➔ @STOWBROTHERS
STOWBROTHERS.COM