

Kitchen / Reception Room  
25'3" x 23'5"

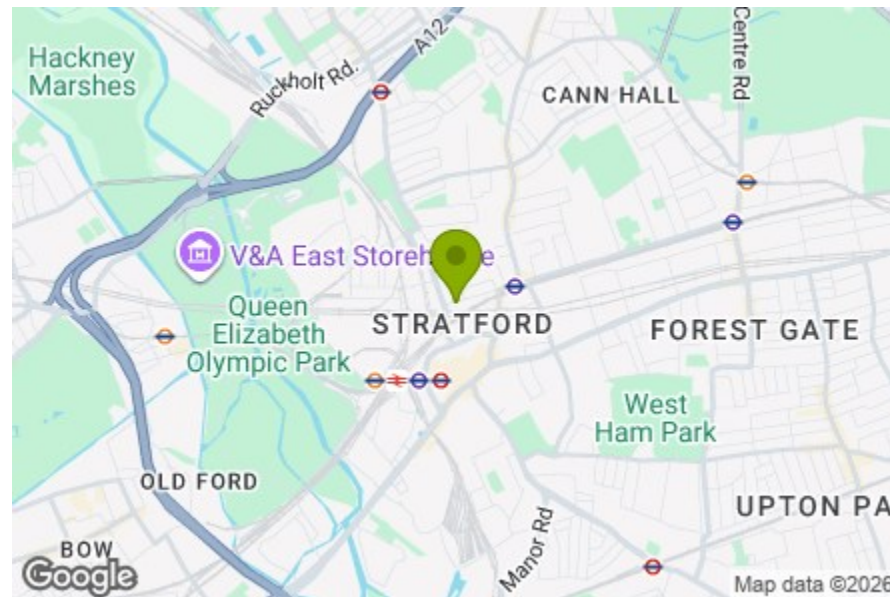
Bedroom  
12'2" x 11'8"

Bathroom  
7'1" x 6'11"

First Floor

Total Area: 55.2 m<sup>2</sup> ... 594 ft<sup>2</sup>

All measurements are approximate and for display purposes only



Energy Efficiency Rating		Current	Potential
Very energy efficient - lower running costs			
(92 plus) A			
(81-91) B			
(69-80) C		79	79
(55-68) D			
(39-54) E			
(21-38) F			
(1-20) G			
Not energy efficient - higher running costs			
England & Wales		EU Directive 2002/91/EC	



## WINDMILL LANE, LONDON

£475,000 Leasehold  
1 Bed Flat



### Features:

- Modern Apartment
- Located on First Floor
- Large Glass Roof Lanterns
- Timber Flooring - Five Ring Gas Hob - Bosch Oven
- Secure Video Entry System
- Communal External Space to Rear (including Bike Store)
- Ten Year Building Warranty
- Fifteen Minute Walk To Queen Elizabeth Olympic Park
- Close to Maryland Station, Stratford Station and Westfield Shopping Centre

Set within a smart contemporary development in the heart of Stratford, this thoughtfully designed one bedroom apartment offers around 600 square feet of beautifully finished living space. Located on the first floor of Tanners House, it's ready to move straight into and comes complete with a ten year building warranty for added peace of mind.

You're perfectly placed here. Maryland Station, Stratford Station and Westfield Shopping Centre are all close by, while Queen Elizabeth Olympic Park is just a fifteen minute walk away, opening up acres of open green space, waterside paths and cultural landmarks. It's a well connected setting with a real sense of momentum, yet still easy to feel at home in.

REQUEST A VIEWING  
0203 325 7227

**E11, E7, E12 & E15**  
hello11@stowbrothers.com  
0203 397 2222

**E4 & N17**  
hello4@stowbrothers.com  
0203 369 6444

**E17 & E10**  
hello17@stowbrothers.com  
0203 397 9797

**E18 & IG8**  
hello18@stowbrothers.com  
0203 369 1818

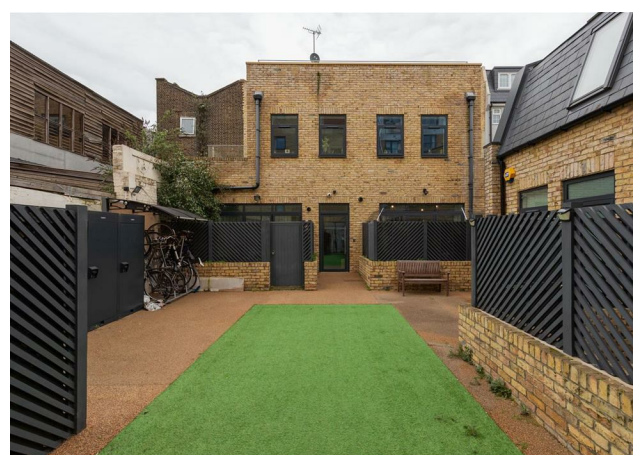
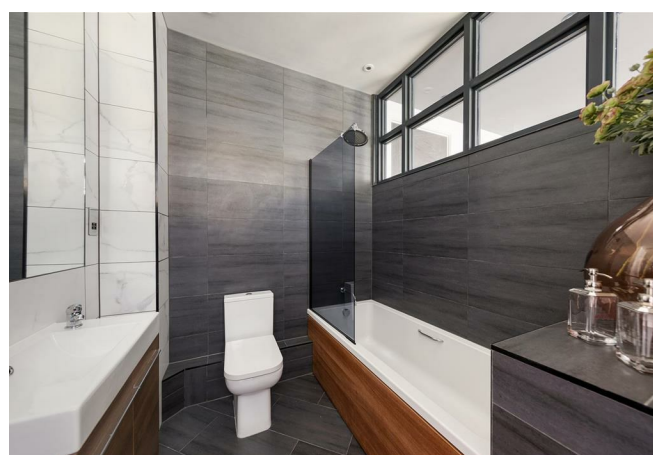
**E8, E9, E5, N16, E3 & E2**  
hellohackney@stowbrothers.com  
0208 520 3077

**New Homes**  
newhomes@stowbrothers.com  
0203 325 7227

**Investment & Development**  
id@stowbrothers.com  
0208 520 6220

**Property Maintenance**  
propertymanagement@stowbrothers.com  
0203 325 7228

STOWBROTHERS.COM  
@STOWBROTHERS



### IF YOU LIVED HERE...

Step inside and you'll find a light filled, carefully considered home arranged around a generous central living space. Large glass roof lanterns draw daylight deep into the apartment, creating a bright and airy feel that shifts beautifully throughout the day. Timber flooring runs underfoot, adding warmth and continuity, while clean lines and a calm palette keep everything feeling balanced and refined.

The kitchen is both practical and sociable, fitted with a five ring gas hob and Bosch oven, alongside integrated appliances and sleek worktops. It's designed with everyday living in mind, equally suited to quiet evenings in or hosting friends for supper. The bedroom is well proportioned and peaceful, and the bathroom finished in a modern, understated style. A secure video entry system adds convenience, while to the rear you'll find communal external space with a bike store, ideal for making the most of life in this well connected part of East London.

### WHAT ELSE?

- Maryland Station, Stratford Station and the Elizabeth line are all within easy reach, offering swift connections across London and beyond.
  - Westfield Stratford City is moments away for shopping, restaurants and cinema trips, while independent cafés and eateries continue to pop up locally.
  - Queen Elizabeth Olympic Park is around a fifteen minute walk, with parkland, waterways, sporting venues and year round events on your doorstep.
- A modern apartment in a prime East London setting, thoughtfully finished and ready to move into.



### A WORD FROM THE EXPERT...

"I spend a lot of time in Stratford — running in the Olympic park, cycling at the outdoor Velo Park, shopping at Westfield or simply meeting friends. The area has come on leaps and bounds since the Olympics, with the new Olympic Village creating loads of amenities, green spaces, sports facilities ... and not least Westfield, which is a must for shoppers and foodies.

Gordon Ramsay's Bread street Kitchen, would be my not-so secret pick, fantastic food, and a stunning roof terrace. For a lazy Sunday brunch, try The Breakfast Club along the canal at Here East. Well-connected and with world-class amenities, Stratford is an area to watch".

KYLI CLAYTON  
E11 ASSISTANT BRANCH MANAGER

REQUEST A VIEWING  
0203 325 7227

FOLLOW US ➔ @STOWBROTHERS  
STOWBROTHERS.COM