

CHELMSFORD ROAD, WALTHAMSTOW

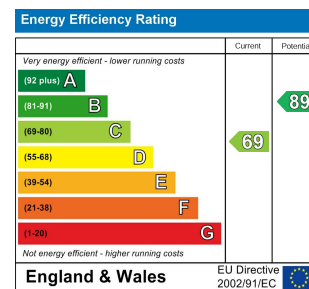
£2,300 Per Calendar Month
 2 Bed House - Terraced



Features:

- Two Double Bedrooms
- Available April
- Period Features
- Well Presented
- Two Receptions
- Private Rear Garden
- Close to Walthamstow Central

A smartly finished, enviably situated two bedroom terrace in the heart of Walthamstow, perfectly placed for everything that makes our wonderful borough so special. You have twin receptions, two double bedrooms and a private rear garden. Walthamstow Central station is a shade over a half mile on foot.



E11, E7, E12 & E15
 hello11@stowbrothers.com
 0203 397 2222

E4 & N17
 hello4@stowbrothers.com
 0203 369 6444

E17 & E10
 hello17@stowbrothers.com
 0203 397 9797

E18 & IG8
 hello18@stowbrothers.com
 0203 369 1818

E8, E9, E5, N16, E3 & E2
 hellohackney@stowbrothers.com
 0208 520 3077

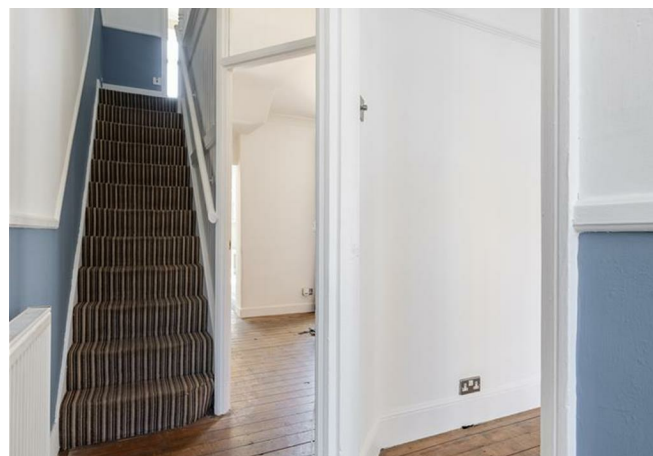
New Homes
 newhomes@stowbrothers.com
 0203 325 7227

Investment & Development
 id@stowbrothers.com
 0208 520 6220

Property Maintenance
 propertymanagement@stowbrothers.com
 0203 325 7228

STOWBROTHERS.COM
 @STOWBROTHERS

REQUEST A VIEWING
 0203 397 9797



IF YOU LIVED HERE

You'll have so much that makes Walthamstow so special right at your fingertips. The comprehensive transport links of Walthamstow Central Station (twenty minutes direct to both Oxford Circus and Liverpool Street) is around a ten minute walk, putting both the West End and The City a mere half hour away door to door.

Inside you have twin reception rooms, coming in at 170 and 120 square feet apiece, each smartly decked

out with dark engineered hardwood underfoot. The front lounge sports a handsome vintage gunmetal hearth and mantel, and gets floods of natural light thanks to the large bay window.

The ground floor's completed by your pristine kitchen, with timber worktops, sleek white fitted cabinets and glossy tiling underfoot. From here you head into the private rear garden, a courtyard with plenty of thriving beds. Upstairs both bedrooms are solid doubles with the master coming in at a particularly impressive 150 square feet.



WHAT ELSE?

- Walthamstow Village is well worth the fifteen minute walk. Its peaceful, part pedestrianised streets are home to some of the finest bars, restaurants and gastropubs for miles around.
- The open green space of Thomas Gamuel Park is right next door.
- For your new local, may we recommend The Castle? It's a classic Village gastropub with a great line in sumptuous Sunday Roasts.

REQUEST A VIEWING
0203 397 9797

FOLLOW US → @STOWBROTHERS
STOWBROTHERS.COM