



First Floor

Total Area: 51.7 m² ... 556 ft²

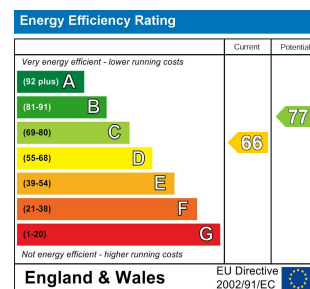
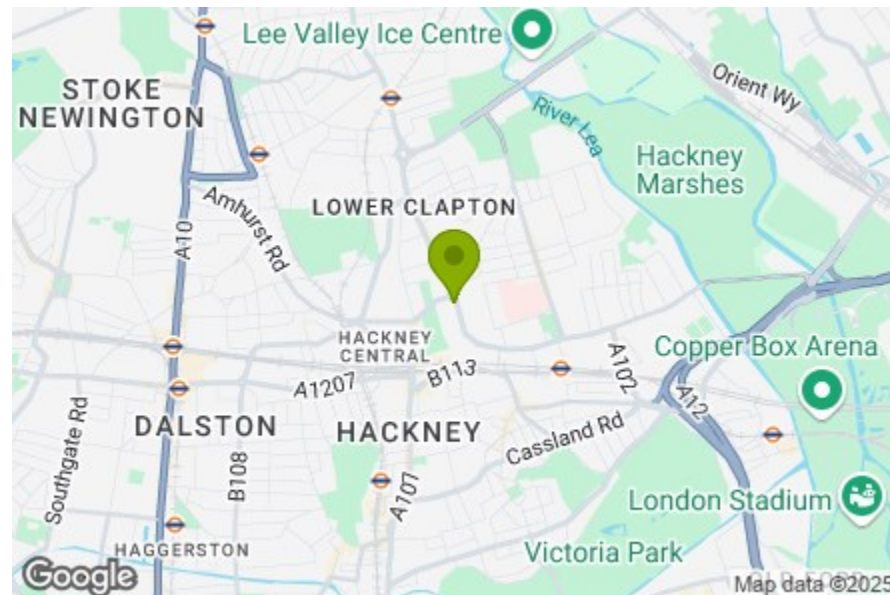
All measurements are approximate and for display purposes only

Kitchen / Dining/ Reception Room
18'11" x 14'5"

Bathroom
6'1" x 8'1"

Bedroom
8'2" x 12'8"

Bedroom
10'4" x 10'6"



URSWICK ROAD, HACKNEY

Offers In Excess Of £525,000 Share of Freehold
2 Bed Apartment - Conversion



Features:

- Two Bedroom Property
- Iconic Building
- Beautifully Presented Throughout
- Communal Gardens
- Moments from Hackney Central

Set in the iconic, Art Deco Strand building, this two double bedroom, first floor apartment has a large, open plan kitchen, diner and reception. It's all just moments away from Lower Clapton Road, Hackney Downs Park and London Fields.

It's an easy twelve minute walk to Hackney Downs station, where Weaver line Overground and Greater Anglia rail services run directly to Liverpool Street in as little as eight minutes.

E11, E7, E12 & E15
hello11@stowbrothers.com
0203 397 2222

E4 & N17
hello4@stowbrothers.com
0203 369 6444

E17 & E10
hello17@stowbrothers.com
0203 397 9797

E18 & IG8
hello18@stowbrothers.com
0203 369 1818

E8, E9, E5, N16, E3 & E2
hellohackney@stowbrothers.com
0208 520 3077

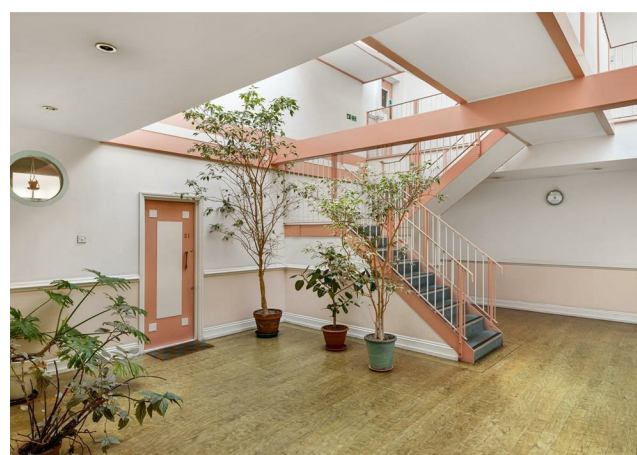
New Homes
newhomes@stowbrothers.com
0203 325 7227

Investment & Development
id@stowbrothers.com
0208 520 6220

Property Maintenance
propertymanagement@stowbrothers.com
0203 325 7228

STOWBROTHERS.COM
@STOWBROTHERS

REQUEST A VIEWING
0208 520 3077



IF YOU LIVED HERE...

Your entrance hall leads to a large, 270 square foot, open plan kitchen, dining and reception space. Beautifully restored timber flooring flows underfoot while tall, Art Deco style windows and doors cast natural light across it all. A Juliet balcony overlooks the courtyard and there's plenty of space for a long dining table and chairs. Your kitchen area is lined with cream and white cabinets, framing a stainless steel oven and extractor hood, and finished off with chunky wooden counter tops and glossy white splashbacks.

Two handsome double bedrooms sit to the rear, both with shuttered art deco windows and more of that blonde timber flooring. Your principal bedroom also features stylistic bespoke uplighting and bespoke fitted shelving. Crossing the living room and back along the hallway, you'll arrive in your classic yet contemporary bathroom. A smart affair, decked out in a sleek combination of glossy white metro tiles, dove grey panelling, a vintage white suite, chrome and ceramic fixtures and fittings, and an antique style cast iron radiator with towel rail. There's also a mixer shower over the bathtub.

You've a choice of two beautiful, green parks nearby. Hackney Downs Park is ten minutes away on foot, where you'll find outdoor tennis and basketball courts. Just a few minutes further in the opposite direction, you'll arrive at London Fields, home to the famous London Fields Lido, an Olympic sized, heated outdoor swimming pool and surrounding sunbathing space. For shopping and dining out, Lower Clapton Road is just moments from your front door, vibrant and filled with artisanal bakeries, coffee shops and pubs.

WHAT ELSE?

- Your new local will be the Dovetail Bar, an intimately designed drinking establishment, where you can unwind with friends and sample the extensive menu of innovative cocktails.
- The Castle Cinema is a crowd funded, community movie theatre that screens an eclectic mix of blockbusters and independent cinema, just a ten minute walk away on Chatsworth Road.
- For healthy, plant based, vegan eats and amazing freshly roasted coffee, you only have to walk six minutes to find WAVE, a minimalist, daytime cafe and restaurant.



A WORD FROM THE EXPERT...

I feel right at home in Hackney, although I'm originally from Greece. You can be anyone, wear whatever you like and always feel welcome. The multiculturalism here comes across in the diversity of the cafés, restaurants, shops and bars. From specialty coffee shops and Michelin star restaurants to beautiful parks and art galleries, Hackney has something for everyone. Weekends at Victoria Park or Broadway market are filled with great community energy, international delicacies and local artisan creations. For dog lovers, the marshes are beautiful for afternoon and weekend walks with your four-legged friends. And while you're there, you can stop by the river Lea at the Princess of Wales for a Sunday roast, Here East for brunch, or Crate Brewery for pizza and a local beer. Properties in the area vary from characterful Victorian and Georgian houses to charming local authority red-brick blocks and beautifully designed modern developments with communal roof terraces. I have found my home in Hackney and it holds a very special place in my heart.

EVA BOUZAKI
HACKNEY BRANCH MANAGER

REQUEST A VIEWING
0208 520 3077

FOLLOW US ➔ @STOWBROTHERS
STOWBROTHERS.COM