

Reception Room
13'1" x 11'11"

Kitchen / Diner
12'5" x 8'11"

Bathroom
7'11" x 6'0"

Storage

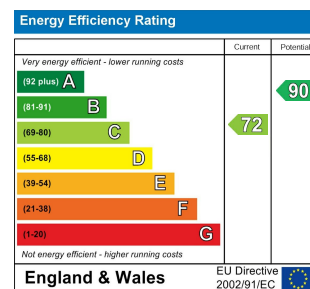
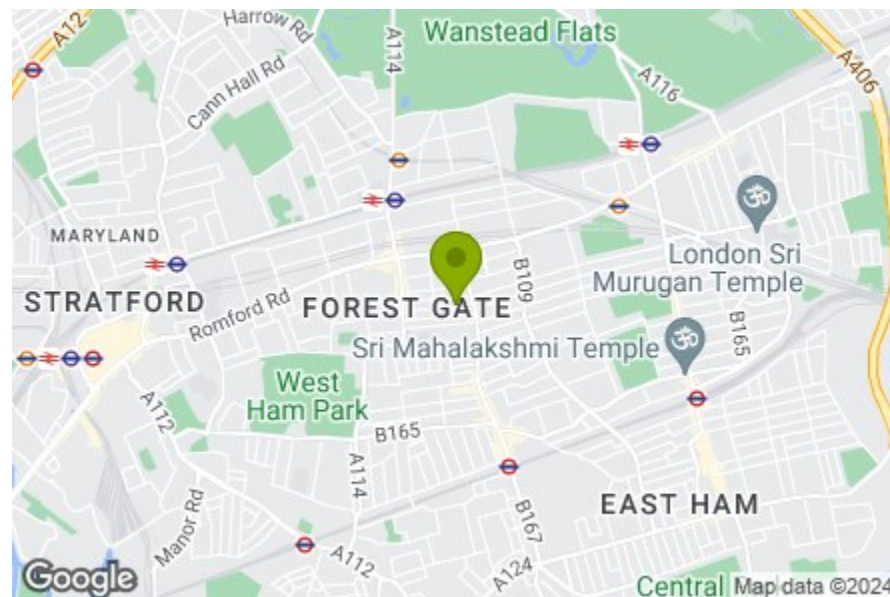
Bedroom
14'2" x 13'1"

Bedroom
12'5" x 6'9"

Bedroom
8'3" x 8'2"

Garden
16'4"

Total Area: 74.0 m² ... 796 ft²
All measurements are approximate and for display purposes only.



STUDLEY ROAD, FOREST GATE

Offers In Excess Of £495,000 Freehold
3 Bed House - Terraced



Features:

- Three Bedroom Period House
- Stunning Kitchen
- Stylish Bathroom
- Period Features such as a Marble Fireplace and Corncing
- Shutters to the Front Room
- Private Garden
- Storage Shed
- Close to Forest Gate Station
- A Short Walk to West Ham Park

Unfolding over two floors, this beautifully finished three-bedroom period home offers a wealth of features, including a well maintained rear garden with storage and a separate reception room and kitchen/diner. As for the location, it's just a few minutes from the excellent amenities of Forest Gate and the greenery of West Ham Park, while Central London is easily accessible thanks to the Elizabeth line, which you can reach ten mins from the front door.

REQUEST A VIEWING
0203 397 2222

E11, E7, E12 & E15
hello11@stowbrothers.com
0203 397 2222

E4 & N17
hello4@stowbrothers.com
0203 369 6444

E17 & E10
hello17@stowbrothers.com
0203 397 9797

E18 & IG8
hello18@stowbrothers.com
0203 369 1818

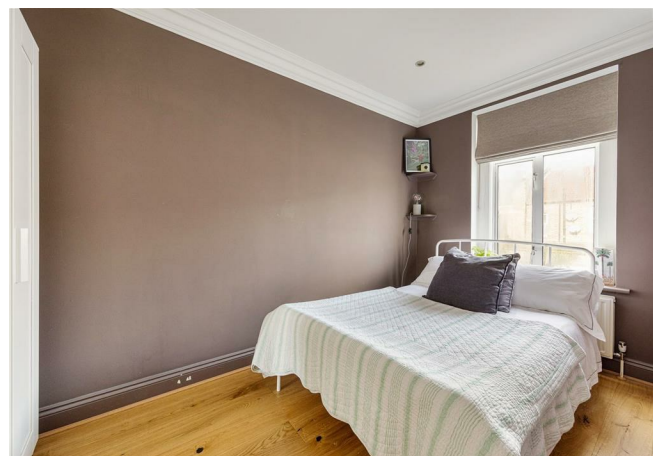
E8, E9, E5, N16, E3 & E2
hellohackney@stowbrothers.com
0208 520 3077

New Homes
newhomes@stowbrothers.com
0203 325 7227

Investment & Development
id@stowbrothers.com
0208 520 6220

Property Maintenance
propertymanagement@stowbrothers.com
0203 325 7228

STOWBROTHERS.COM
@STOWBROTHERS



IF YOU LIVED HERE

Behind that timeless brick frontage, you'll find a spacious home with a smart layout that's been thoughtfully designed throughout.

Step into your spacious hallway and you'll first reach your bright and airy reception room, which has immaculate decor and a lovely original features such as the marble fireplace and corning, as well as more recent updates such as the bespoke shutters.

The kitchen/diner has more of this elegant style, with sleek units, integrated appliances, warm cork flooring and some clever carpentry.

Open the doors up at the rear to enjoy your charming rear garden, which has striking yet low maintenance quarry tiles in place of a lawn and modern horizontal slatted fencing, as well as a storage shed. The stunning bathroom is bright and contemporary with stylish tiling and fittings.

Head up to the first floor for a trio of immaculate bedrooms - a master with custom storage at the front and two good sized rooms at the rear.

When you can finally tear yourself away from your lovely home, you'll be delighted to find some fantastic amenities nearby. Start with a stroll to Wanstead Flats (once Henry VIII's favoured hunting ground), which is ideal for dog-walkers, fitness fans and picnickers. On the way there, stop off at the Ramble Cafe for a coffee and cinnamon bun, or stroll a bit further to Winchelsea Road, a thriving hub with some fantastic eateries located in the old railway arches. Look out for Joyau wine bar, The Wanstead Kitchen and Wild Goose Bakery, but you're sure to uncover some gems of your own in this dynamic neighbourhood.

WHAT ELSE?

- Forest Gate station is around ten minutes on foot, where you can use the Crossrail to get directly to Liverpool Street in about 13 mins or Bond St in 19 mins. Drivers have easy access to the M25 and North Circular.
- Parents will be pleased to know you have a wide choice of great primary and secondary schools in the area.
- You'll never be stuck for essentials since there's an abundance of convenience stores nearby, plus you're only a short four minute hop on the Elizabeth line from Stratford for Westfield (and the Olympic Park).



A WORD FROM THE OWNER...

"After years of renting in Hackney, we took the plunge and invested in a property. Forest Gate was an obvious choice with its excellent transport connections, ensuring an easy morning commute. The abundance of green spaces, including West Ham Park, Wanstead Flats, and Wanstead Park, makes it an ideal haven for dog owners. Our neighbourhood boasts Wild Goose Bakery, serving tasty sourdough, coffee, and cakes. For fitness enthusiasts, CrossFit Dawn, situated in the Army Reserve Centre, receives a perfect 10/10 for its outstanding trainers and positive vibes.

Our home exudes a warm and inviting atmosphere. We have upgraded the kitchen and bathroom, opting for cork flooring and a neutral colour palette. Spanning the full width of the house, the primary bedroom boasts an impressively generous size with built-in wardrobes, ideal for concealing any clutter. Outside, the garden is perfectly designed for entertaining while requiring minimal upkeep."

REQUEST A VIEWING
0203 397 2222

FOLLOW US → @STOWBROTHERS
STOWBROTHERS.COM