



VETCHLING WAY, LONDON

£376,000 Share of Freehold
1 Bed Apartment



Featured:

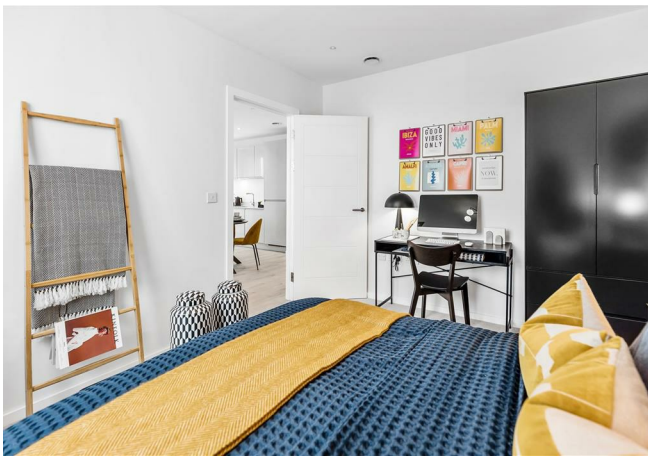
- New Apartments and regeneration project
- Lea Valley Line within 5 mins
- Leisure facilities and recreational spaces
- 10 Year Build Warranty
- High Spec
- Investment Area
- 2 Year Product Warranty

Meridian Water is a 25-year regeneration programme that's set to transform this corner of the capital. Putting all you need to live well on your doorstep, it will offer luxury apartments in North London, world class public spaces and dynamic places to work. Not to mention a wealth of nature, both within the development and courtesy of neighbouring Lee Valley Regional Park.

As the first phase of Meridian Water's regeneration plan, Meridian One will create up to 1,000 new build apartments in North London, a new station square, plus a host of shops, leisure facilities and recreational spaces.

While there's an array of studio, one and two bedroom apartments for sale in North London, available for private sale and shared ownership, this is more than just somewhere to live. A whole new district is being created. A vibrant and dynamic place that's designed to nurture community and enhance the lives of all its residents.

REQUEST A VIEWING
0203 325 7227



REQUEST A VIEWING

0203 325 7227



FOLLOW US → @STOWBROTHERS
STOWBROTHERS.COM



Kitchen/ Living Room/ Dining

25'3" x 9'2"

Bedroom One

15'1" x 10'2"

Balcony

21'3"

REQUEST A VIEWING

0203 325 7227



FOLLOW US ➔ @STOWBROTHERS
STOWBROTHERS.COM



REQUEST A VIEWING
0203 325 7227

Meridian One proudly reimagines what London life entails. Built on three pillars – park life on your doorstep, a place to make and create, and animating streets – every aspect of life at our new apartments in North London has been carefully considered and enhanced.

FOR ALL BUZZES, SCURRIES & WALKS OF LIFE

The whole of Meridian Water is being created as a gateway to the 10,000 acre Lee Valley Regional Park, with a network of pathways and cycle routes enabling easy and safe access to this oasis from our North London apartments.

At Meridian One, you'll also find a perfect blend of the great outdoors and indoors. Here, creating homes for all walks of life, extends to scurries and buzzes of life too. The site is peppered with gardens and greenery for you to enjoy.

Whether that takes the form of relaxing with a book, letting the kids blow off steam, or perhaps getting involved in the community garden in our meanwhile space (run by The Conservation Volunteers and in place until at least 2026) or stretching off before running along the canal is up to you. It's there on your doorstep to be enjoyed any way you want.



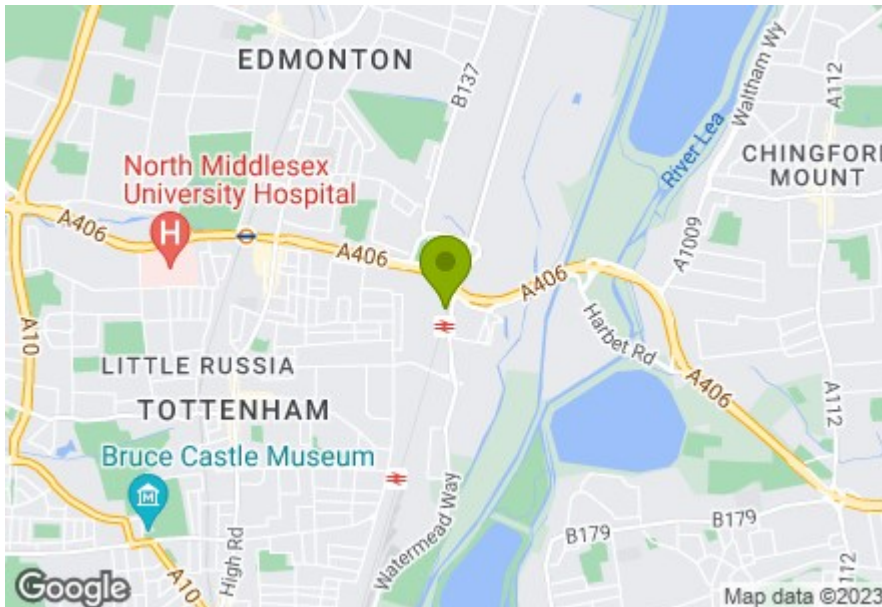
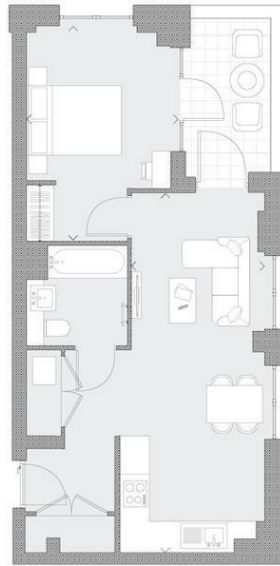
Word from the Owner

A PLACE TO MAKE AND CREATE

While superbly connected to central London, it was important to create work opportunities closer to home. Whether you're a maker in the traditional sense or making plans to set up on your own, your commute could be minutes with the workshops and workspaces that are being created.

Bloqs is a brand new professional makerspace that offers industry grade equipment on a pay as you go or longer term basis. An array of new

FOLLOW US → @STOWBROTHERS
STOWBROTHERS.COM



Energy Efficiency Rating		Current	Potential
Very energy efficient - lower running costs			
(92 plus) A			
(81-91) B			
(69-80) C			
(55-68) D			
(39-54) E			
(21-38) F			
(1-20) G			
Not energy efficient - higher running costs			
England & Wales		EU Directive 2002/91/EC	

E11 & E7
 hello11@stowbrothers.com
 0203 397 2222

E17 & E10
 hello17@stowbrothers.com
 0203 397 9797

Land & New Homes
 newhomes@stowbrothers.com
 0203 325 7227

E4
 hello4@stowbrothers.com
 0203 369 6444

E18 & IG8
 hello18@stowbrothers.com
 0203 369 1818

STOWBROTHERS.COM
 FOLLOW US
 @STOWBROTHERS