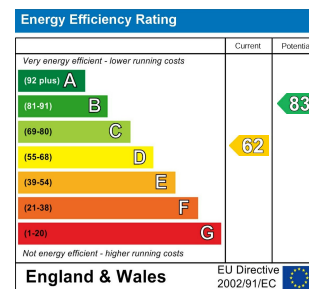




- WC
- Kitchen / Diner
17'5" x 12'1"
- Garage
15'1" x 9'1"
- Bedroom
10'7" x 7'11"
- Bedroom
15'4" x 9'0"
- Bedroom
11'11" x 9'0"
- Bathroom
- WC
- Bedroom
9'9" x 7'10"
- Bedroom
14'4" x 9'0"
- Bedroom
12'2" x 9'0"
- Bathroom
8'4" x 7'10"



THE RIDGEWAY, CHINGFORD

£2,000 Per Calendar Month
 5 Bed House



Features:

- Large Property
- Premier Road
- Unfurnished Home
- Renovated Property
- Private Garden
- Two Main Bathrooms
- Two W/C's
- Council Tax band E

A fantastically flexible, five/six bedroom terraced house, well-presented over three floors, this recently refurbished property offers an impressive two main bathrooms, two WCs, a spacious, versatile garage, and a lush South-facing garden to boot.

Located on a quiet, sought-after residential street, near Epping Forest, this home is flexible enough for all manner of living arrangements and is close to great transport, leisure and shopping options to appeal to busy urbanites and nature lovers alike.

E11 & E7
 hello11@stowbrothers.com
 0203 397 2222

E17 & E10
 hello17@stowbrothers.com
 0203 397 9797

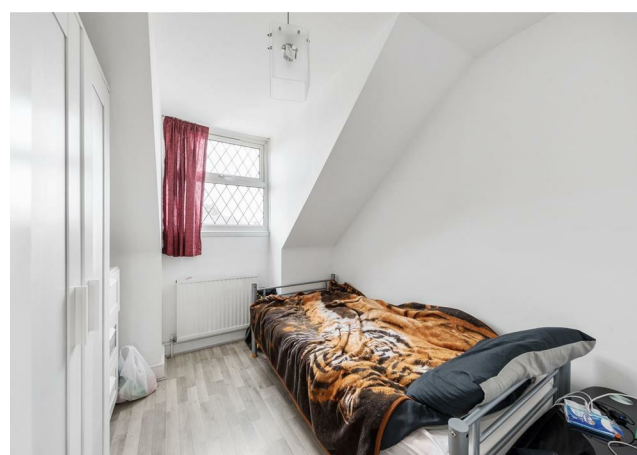
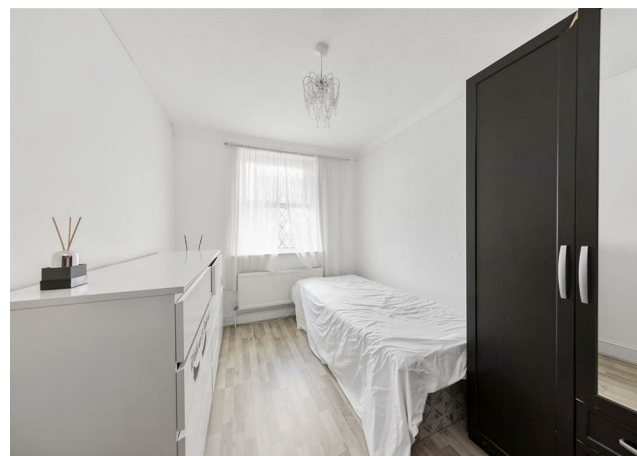
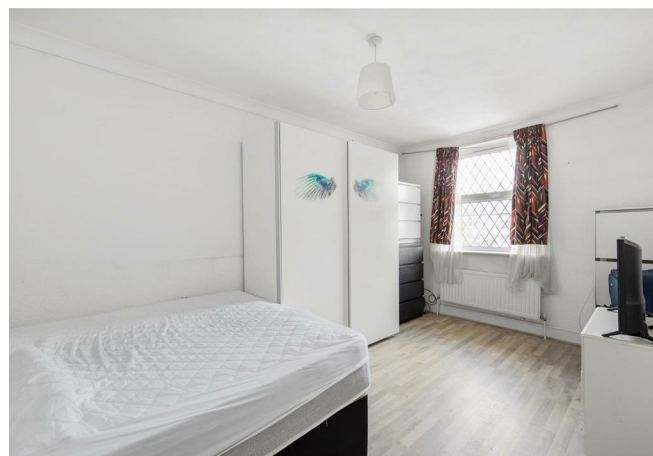
Land & New Homes
 newhomes@stowbrothers.com
 0203 325 7227

E4
 hello4@stowbrothers.com
 0203 369 6444

E18 & IG8
 hello18@stowbrothers.com
 0203 369 1818

STOWBROTHERS.COM
 FOLLOW US
 @STOWBROTHERS

REQUEST A VIEWING
 0203 397 9797



IF YOU LIVED HERE...

You'll be delighted by the sheer space and room options at your fingertips, with all six bedrooms offering ample space for storage. Your ground floor maximises versatility - the first of your WCs is handily located here, a winner for busy mornings. Your kitchen is brought to life by a smart harlequin patterned floor. Big enough to seat a horde of hungry family and friends, there are doors leading to your sun-trap of a garden where tables for entertaining can sit comfortably on your long lawn, secluded by timber fencing.

On your first floor you have three good-sized double bedrooms, with a mix of sash windows and panes with characterful leaded detail. The first of your two bathrooms is a practical, low-fuss affair. A white panelled, full-length tub comes complete with a chrome shower head for speedy morning starts. More ash-style flooring throughout gives coherence. On your top floor, you'll find a further three good-sized bedrooms with elegant sloping ceilings and more gorgeous Tudor-style glazing. Built in storage has been thoughtfully designed

to the max in your second bathroom, so you've space to stretch out for quality R&R.

You're close to Station Road, a bustling stretch for all your shopping needs, and Breeze, a Turkish food nirvana for mouthwatering mezzes. Vast, wild greenery is just a stone's throw away, as is Butler's Retreat, a Grade II listed building thought to have been built in the early nineteenth century. It's home to The Larder, offering organic milk from a local dairy and cheese from Neal's Yard, not to mention breathtaking views over Chingford Plain. Lea Valley Leisure Centre is a thirteen minute cycle ride via a scenic route between two tranquil reservoirs, so you'll never be short of activities.

WHAT ELSE?

- Chingford station is a twenty-minute walk, and the Overground whisks you to Liverpool Street in twenty-seven. For drivers, you'll find an effortless commute via the North Circular, a mere fifteen minutes away.



A WORD FROM THE EXPERT...

I enjoy the outdoors as well as the hustle and bustle of the city, so Chingford is the perfect spot for me. With Epping Forest on the doorstep, cycling, hiking and exploring are only a hop away. And the amazing transport links can take you into the city in less than half hour.

Being able to alternate between Chingford Mount and North Chingford for a pub, restaurant, café or a takeaway means I'm spoilt for choice. I particularly enjoy meeting friends, family and colleagues in The Rusty Bike to grab some Thai food, choose from a large selection of beers or catch a game of football.

Weekends are reserved for the Kings Head. The beer garden is perfect for basking in the sun during the summer. In the colder months you can

REQUEST A VIEWING
0203 397 9797

FOLLOW US → @STOWBROTHERS
STOWBROTHERS.COM