



Westward Road, Chingford

**£570,000**

3 bed, House - Terraced

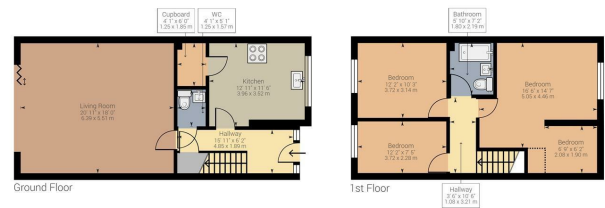


»» **Features**

Stow Brothers are pleased to offer this stunning newly constructed three bedroom mid terrace home which has been finished to the highest of standard through out and is

ideally located to provide easy access to all local amenities.

- New Build House
- Mid Terrace
- Three bedrooms
- Lovely Rear Garden
- Off Street Parking



Approximate net internal area: 1229.32 ft<sup>2</sup> / 114.21 m<sup>2</sup>  
 While every attempt has been made to ensure accuracy, all measurements are approximate, not to scale. This floor plan is for illustrative purpose only and should be used as such by any prospective tenant or purchaser.

Powered by Giraffe360

### The Stow Brothers

➔➔ E17 Office  
 236 Hoe Street, E17 3AY  
 0203 397 9797  
 hello17@stowbrothers.com

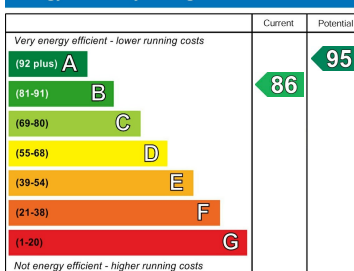
➔➔ E11 Office  
 117a High Street, E11 2RL  
 0203 397 2222  
 hello11@stowbrothers.com

➔➔ E4 Office  
 1 Bank Buildings,  
 The Avenue, E4 9LE  
 0203 369 6444  
 hello4@stowbrothers.com

stowbrothers.com  
 f @ @stowbrothers

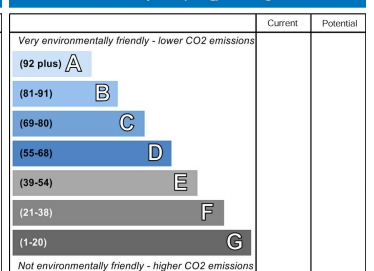


### Energy Efficiency Rating



EU Directive 2002/91/EC

### Environmental Impact (CO<sub>2</sub>) Rating



EU Directive 2002/91/EC