

Energy Efficiency Rating		Current	Potential
Very energy efficient - lower running costs			
(82 plus) A		87	87
(61-81) B			
(49-60) C			
(39-48) D			
(29-38) E			
(21-38) F			
(1-20) G			
Not energy efficient - higher running costs			
England & Wales		EU Directive 2002/91/EC	



## SOUTH GROVE, LONDON

£1,675 Per Calendar Month  
 2 Bed Apartment - Purpose Built



### Features:

- High Spec Apartment
- Open Plan Living Room
- Two Double Bedrooms
- Two Bathroom (En-Suite)
- Modern Fitted Kitchen
- Close To Station
- Concierge Service
- Council Tax Band C

A spacious two bedroom two bathroom apartment in a contemporary, designer development just moments from Walthamstow High Street, St James Street station and our newest social hub – Crate St James. Design & Decor is boxfresh and spotless throughout and all properties have private balconies.

Malt Court is a striking designer development, sleek and modern with pleasant communal areas and grounds, including bicycle parking. Cyclists can be at Walthamstow Wetlands, at 500 acres London's largest nature reserve, in just five minutes courtesy of the Q2 Cycleway, which weaves its way right into the heart of the city.

**E11 & E7**  
 hello11@stowbrothers.com  
 0203 397 2222

**E17 & E10**  
 hello17@stowbrothers.com  
 0203 397 9797

**Land & New Homes**  
 newhomes@stowbrothers.com  
 0203 325 7227

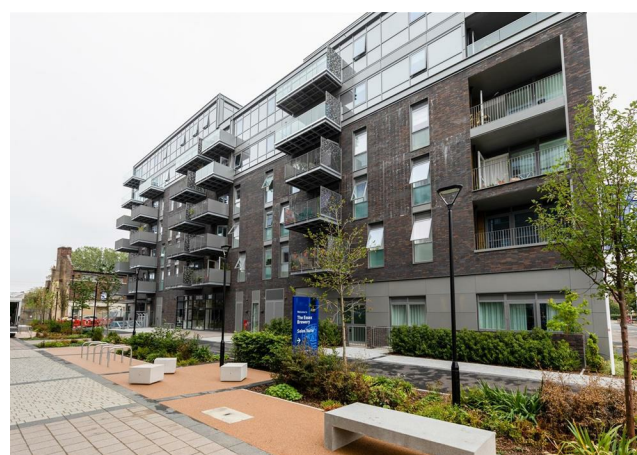
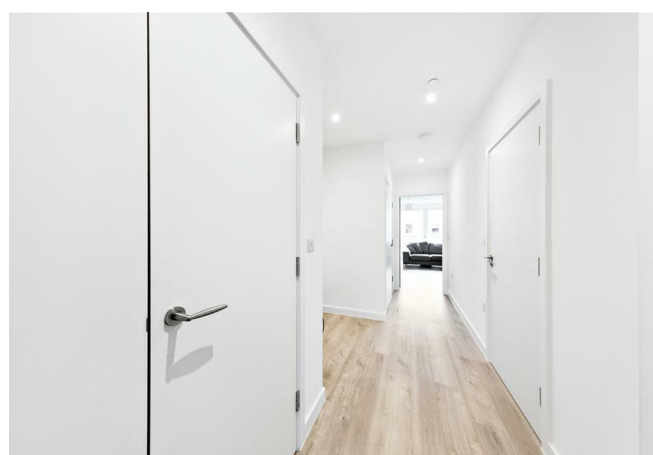
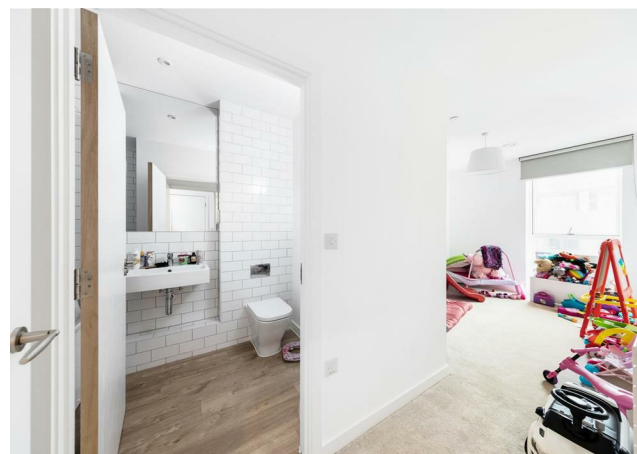
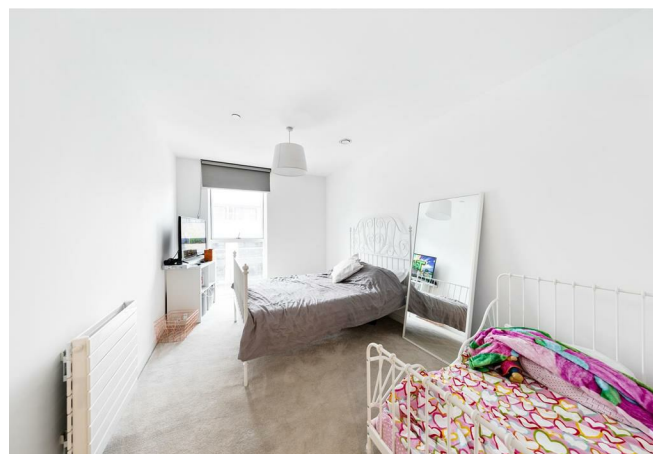
**E4**  
 hello4@stowbrothers.com  
 0203 369 6444

**E18 & IG8**  
 hello18@stowbrothers.com  
 0203 369 1818

STOWBROTHERS.COM  
 FOLLOW US  
 @STOWBROTHERS

REQUEST A VIEWING  
 0203 397 9797





IF YOU LIVED HERE...

You'll be enjoying brand new, boxfresh fixtures and fittings throughout, with high end appliances in the spacious kitchen/lounge areas, coming in at anything up to a capacious 280 square feet. Stylish grey engineered hardwood runs underfoot, you have matching grey splashbacks, a generous suite of glossy white fitted cabinets and a full complement of integrated appliances.

Elsewhere, bedrooms are all generous doubles, finished to the same high standard, with plush grey carpeting, chrome fixtures and designer radiators. Bathrooms are alternately

finished in gleaming white or glossy grey metro tiling, with walk-in rainfall showers. And finally of course there's your private balcony or roof terrace; wonderful outdoor spaces with views over the city.

St James Street station is just three minutes' walk, for direct twenty minute runs to Liverpool Street. Alternatively, Walthamstow Central is just a half mile on foot and will get you straight to Oxford Circus just as quickly via the Victoria line. Walthamstow High Street, home to the longest street market in Europe, starts right next to St James Street, for all the supermarkets, cafes and other amenities you could wish for.



WHAT ELSE?

- Crate St James, home to a rotating array of independent entrepreneurs from cafes to bakeries, breweries and barbers, is less than five minutes' walk. Be sure to try the mouth-watering offerings at Baggio Burger.
- For your new local we have to recommend a personal favourite, The Chequers is a real 'stow institution, a much loved gastropub with a delicious menu and large beer garden, all just five minutes away on foot.
- Current or prospective parents will be pleased to know you have nineteen primary/secondary schools in a one mile radius alone, all rated 'Good' or better by Ofsted. The 'Outstanding' South Grove Primary is just a two minute walk.

REQUEST A VIEWING  
0203 397 9797

FOLLOW US → @STOWBROTHERS  
STOWBROTHERS.COM