
 **Millstream Towers, Station Road, London**
Prices From £530,000 Leasehold
2 Bed Apartment



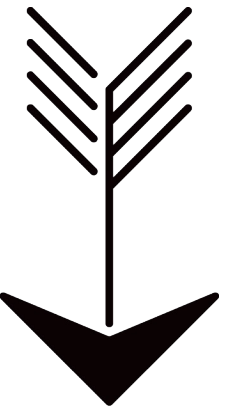
Energy Efficiency Rating		Current	Potential
<i>Very energy efficient - lower running costs</i>			
(92 plus) A			
(81-91) B			
(69-80) C			
(55-68) D			
(39-54) E			
(21-38) F			
(1-20) G			
<i>Not energy efficient - higher running costs</i>			
England & Wales		EU Directive 2002/91/EC 	





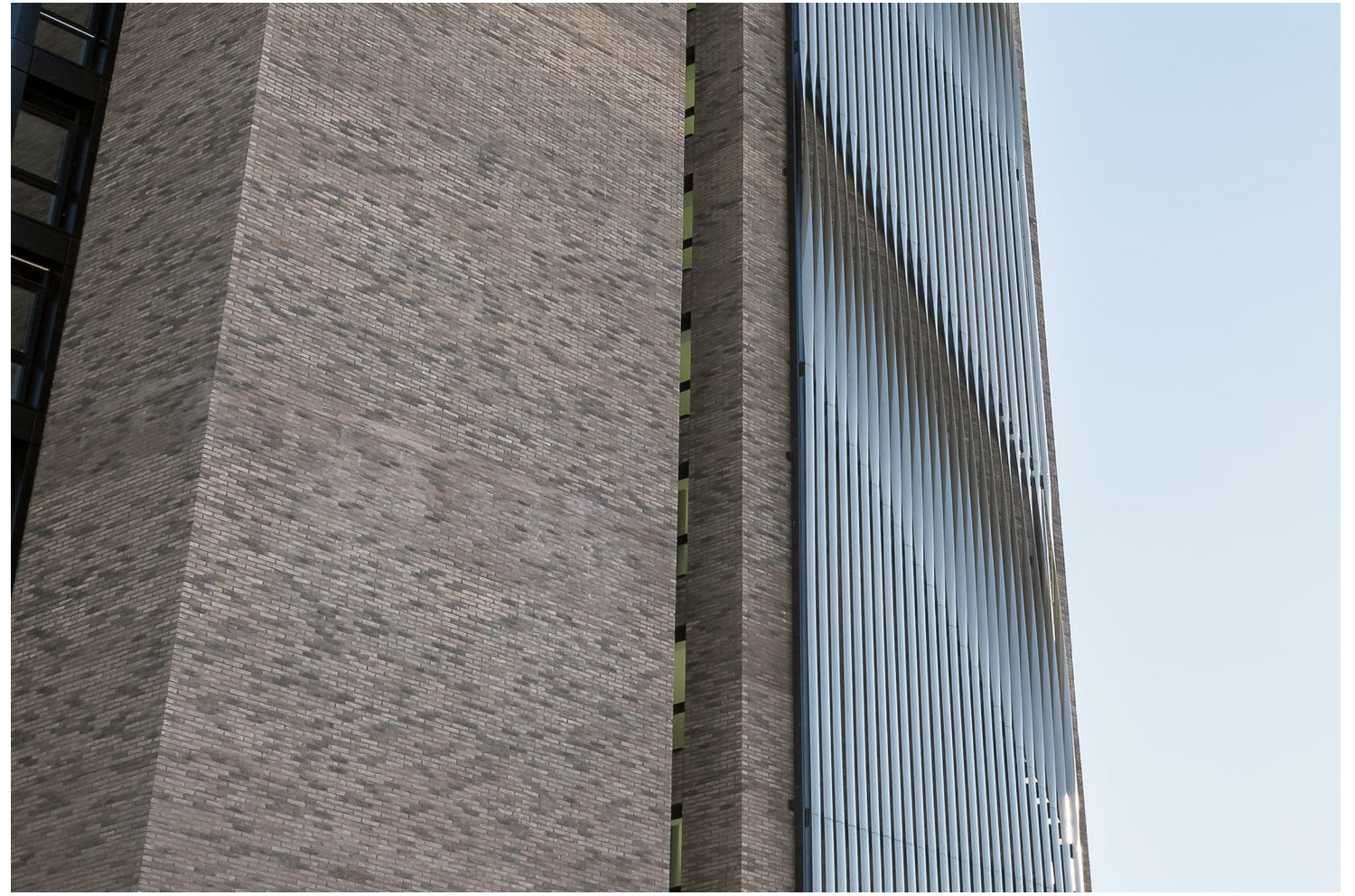
Features

- New Build Development
- Help to Buy
- 2 Beds from £535,000
- 3 Beds from £650,000
- <https://www.stowbrothers.com/property/millstream-towers-station-road-n19-london/>
- <https://www.stowbrothers.com/property/station-road-london-2/>
- 2 min walk to Tottenham Hale Station
- Built in Wardrobes to All Bedrooms.



WHAT ELSE?

- Down Lane Park is just across the road from your front door, home to tennis courts, an outdoor gym and acres of green space for tea time strolls or morning jogs.
- Communal areas are well kept and striking, particularly the imposing double height entranceway and atrium.
- Two wheeled enthusiasts are particularly well served by the plentiful cycle paths flowing around you. You can be at London's largest nature reserve, the 500 acre Walthamstow Wetlands, in just five minutes.





➤➤ IF YOU LIVED HERE

A selection of 1,2 & 3 beds You'll have plenty of living space at an enviable elevation. Nineteen, twenty and Twenty-one floors up the sheer sense of freedom you get from your private, sheltered balcony is as serene as it is breathtaking. Inside, your lounge is handsomely decked out with smoky grey engineered hardwood flowing underfoot with underfloor heating throughout.

Your manor grey kitchen cabinets are artfully tucked away to one corner, underlit with complementary countertops and a full range of integrated appliances. Elsewhere, your bedroom's a luxuriously appointed double with plush carpet, ornate statement wall and floor to ceiling windows. Finally, your bathroom, brimming with boutique chic and pristinely tiled from floor to ceiling with a rainfall shower over the tub.

You're surrounded by natural blue and green space here, and yet barely a few steps from the comprehensive transport links of Tottenham Hale, putting a whole host of landmark destinations within easy reach. Kings Cross is just thirteen minutes away direct via the speedy Victoria line, with Oxford Circus and the West End a mere three minutes further. If you're staying local then the riverside tranquillity of The Ferry Boat Inn is sure to become a favourite. Just five minutes' walk.

