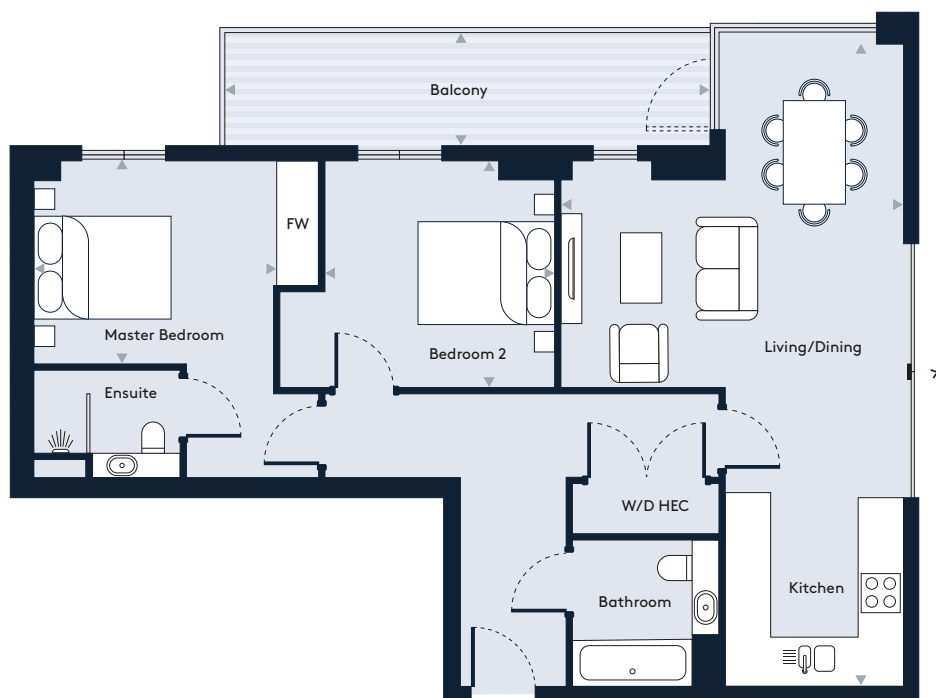


# Apartment 34, Floor 5

## 2 Bedroom apartment



**Walthamstow Gateway**  
A new destination by Solum



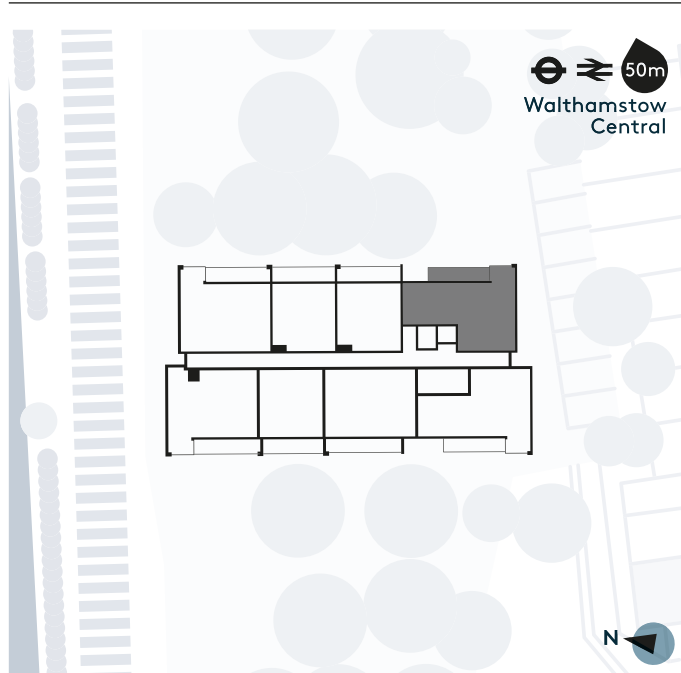
### Key

W/D	Washer/Dryer	HEC	Heating/Electrical Components
FW	Fitted Wardrobe		

### Dimensions

Room	mm	ft
Living / Dining / Kitchen	4914 x 9228	16'1" x 30'3"
Master Bedroom	3453 x 2895	11'3" x 9'5"
Bedroom 2	3300 x 3245	10'9" x 10'7"
Balcony	6866 x 1396	22'6" x 4'6"
<b>Total Internal Area</b>	<b>78.8 m<sup>2</sup></b>	<b>848 sq ft</b>

### Floor Plate



\* South facing windows are not full height

Floorplans shown for Walthamstow Gateway are for approximate measurements only and are not to scale. Exact layout and sizes may vary. Totals represent the Gross Internal Area (GIA). All measurements may vary within a tolerance of 5%.